

ELLSWORTH PLACE - SINCE 1937

Mayfield, Unincorporated Santa Clara County

Annexed by the City of Palo Alto on May 2, 1947

REGARDING: Applications: 23PLN-27, (23PLN-00027, 23PLN-00025)

In c. 1937, a couple from San Francisco retired to Mayfield and a portion of lot 71 of G.M. Wooster Subdivision of the Clarke Ranch.

Katherine Emerson (McLaughlin) b. 10 Dec 1869, d. 17 Feb 1956
Eugene G Emerson b. abt. 1879, d. 9 Dec 1939

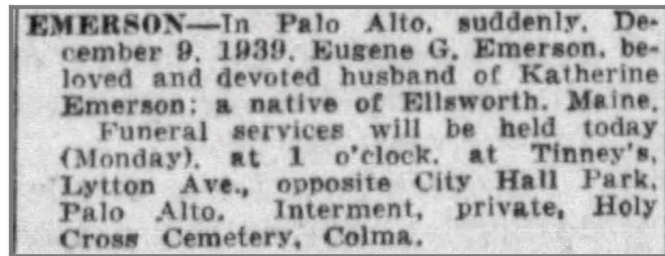
ELLSWORTH PLACE is named for Ellsworth, Maine, the hometown of Eugene G. Emerson, which is named for United States Founding Father Oliver Ellsworth.

Newspapers
by ancestry

<https://www.newspapers.com/image/457708118>

The San Francisco Examiner (San Francisco, California) · Mon, Dec 11, 1939 · Page 11

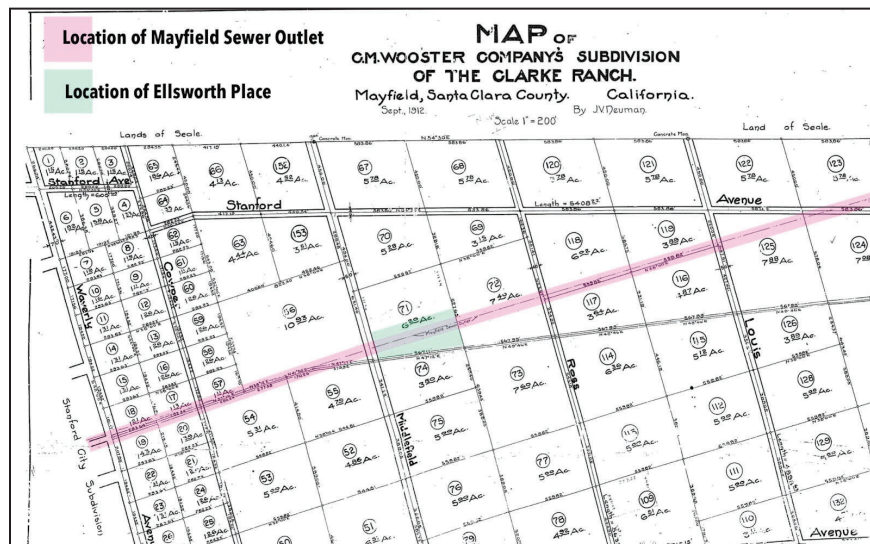
Downloaded on Feb 27, 2023



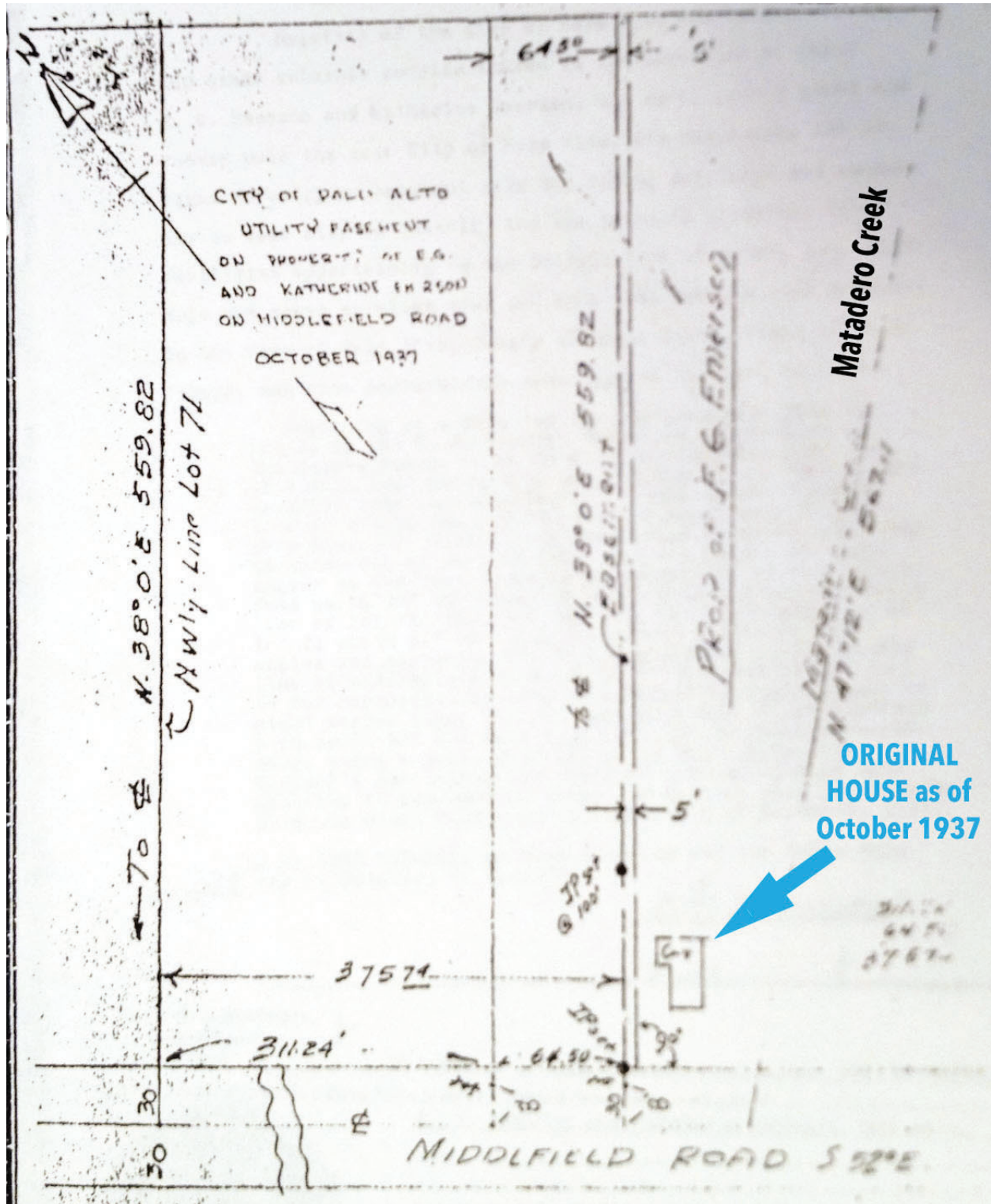
Copyright © 2023 Newspapers.com. All Rights Reserved.

Newspapers
TM

The Ellsworth Place road follows the Mayfield Sewer Outlet, which is mapped on the 1912 C.M. Wooster Company's Subdivision of the Clarke Ranch Map.

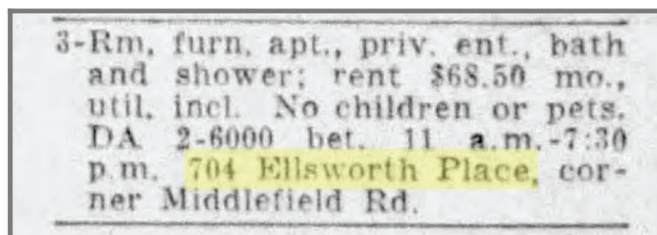
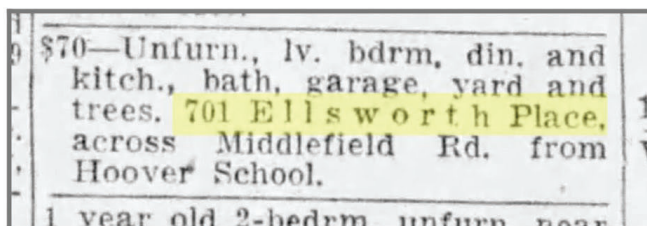


The first house built becomes 702 & 704 Ellsworth Place, and it is referenced on the hand-drawn map shown on page four of the Grant of Easement For Utility Facilities to the City of Palo Alto, dated October 12, 1937. The boundaries of the parcel of land extending to both the centers of Matadero Creek and Middlefield Road.

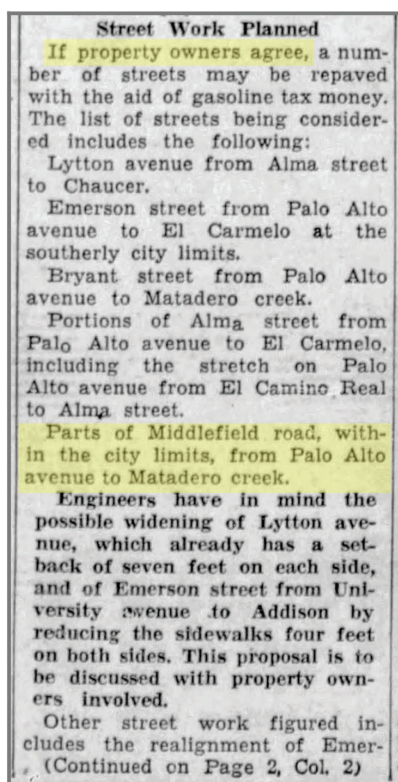
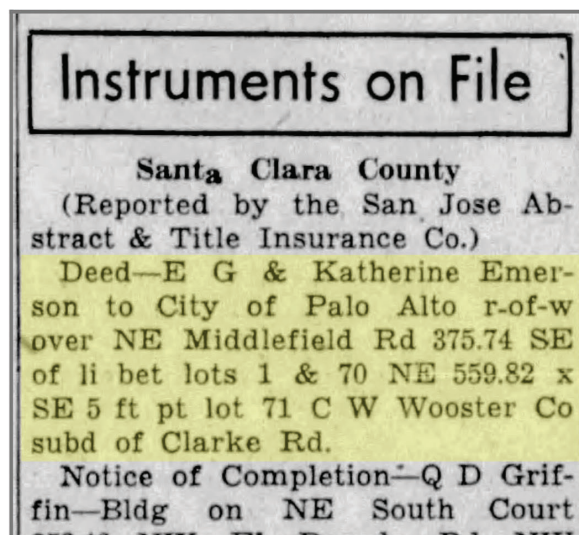


The first homes of Ellsworth Place mini-subdivision were built in 1938 and include house numbers 701, 705, and 706. They are actual modest homes of less than 900 sq ft in size. After Eugene G. Emerson's death in 1939, according to voter registrations, the 1950s Census Report, Polk's Palo Alto City Directory, and The Daily Palo Alto Times, Katherine Emerson maintains several rental properties on Ellsworth Place, and lives between 701, 702 Ellsworth Place and another property located at 2795 Middlefield Road. She rents these properties along with the 3-Rm apartment of address 704 up until about 1955.

ORIGINAL HOMES of ELLSWORTH PLACE (not including the two duplexes)					
House number	lot size in sq f	Year built	House size in sq ft	# of Rooms	
701	approx. 4460	1938	approx. 800 - 900	1 bedroom, 1 bath	
702 & 704	approx. 4443	c. 1850 - 1937	approx. 1,100 - 1,200	likely 2 bedroom, 1 bath + 3 room attached apartment	
705	5,060	1938	approx. 800 - 900	2 bedroom, 1 bath	
706	3,480	1938	845	2 bedroom, 1 bath	
712	4,020	1946	1,100	2 bedroom, 1 bath	
718	3,800	1945	1,112	2 Bedroom, 2 bath	
724	3,818	1947	1,010	2 Bedroom, 1 bath	
730	3,960	1947	1,017	2 bedroom, 1 bath	
732	4,116	1947	984	2 bedroom, 1 bath	
736	4,410	1947	1,229	2 bedroom, 1 bath	
740	4,480	1949	828	2 bedroom, 1 bath	
741	4,656	1949	880	2 bedroom, 1 bath	
742	4,357	1947	1,223	3 bedroom, 2 bath	



Ellsworth Place is located in an industrial area known as “East of South Palo Alto”. In 1937, the Emersons give “Right-of-Way” over their portion of Middlefield Road to the City of Palo Alto in preparation for improvements in 1938. They later deed it to The City of Palo Alto in 1949.



The view from Ellsworth Place across Matadero Creek is of the Heinz Warehouse Buildings. These buildings were integral for training during WWII.



Flooding was common at the crossing of Middlefield Road and Colorado Ave.



In 1940, a factory for airplane parts opened up where the Safeway in Midtown is located now. This location is a block from Ellsworth Place.

Plane Parts Factory Going Up Here

In addition to helping to train pilots, this community is playing a part in the national defense program: Development of aircraft accessories for the army and navy is proceeding, and it won't be long before production of electrical equipment, engine and flight control improvements will be under way.

Center of this activity is at 2815 Middlefield road, site of the old hammer factory east of the South Palo Alto School, where Jack-Heintz Co., Ltd., is continuing its experimental work and at the same time erecting a large addition to serve as offices and production plant.

In about two months the building operations will be finished, giving a two-story structure facing Middlefield road, and a one-story factory and laboratory, with warehouse in the rear. Total floor space will be 30,000 square feet. The site being developed has a frontage of 140 feet and a depth of 220 feet.

Machinery Is Arriving

Meanwhile, machinery is arriving from the East. By the time full production is reached next year the \$500,000 enterprise will have a payroll of approximately 300, according to Ralph M. Heintz, executive vice president and a graduate in chemical engineering from Stanford with the class of '20. Mr. Heintz is also vice president of Heintz & Kaufman, Ltd., of South San Francisco, manufacturers of radio and aircraft accessories, and of Globe Wireless, Ltd., of San Francisco.

President of the local company is William S. Jack of Cleveland, manufacturer for many years of automotive parts and formerly with the Marquette Metal Products Company and of Pump Engineering Service Corporation.

His son, William R. Jack, who arrived from Cleveland a few months ago, is treasurer.

Local People on Staff

Included in the personnel of the company are several Stanford people and residents of Palo Alto, in addition to Mr. Heintz. They are:

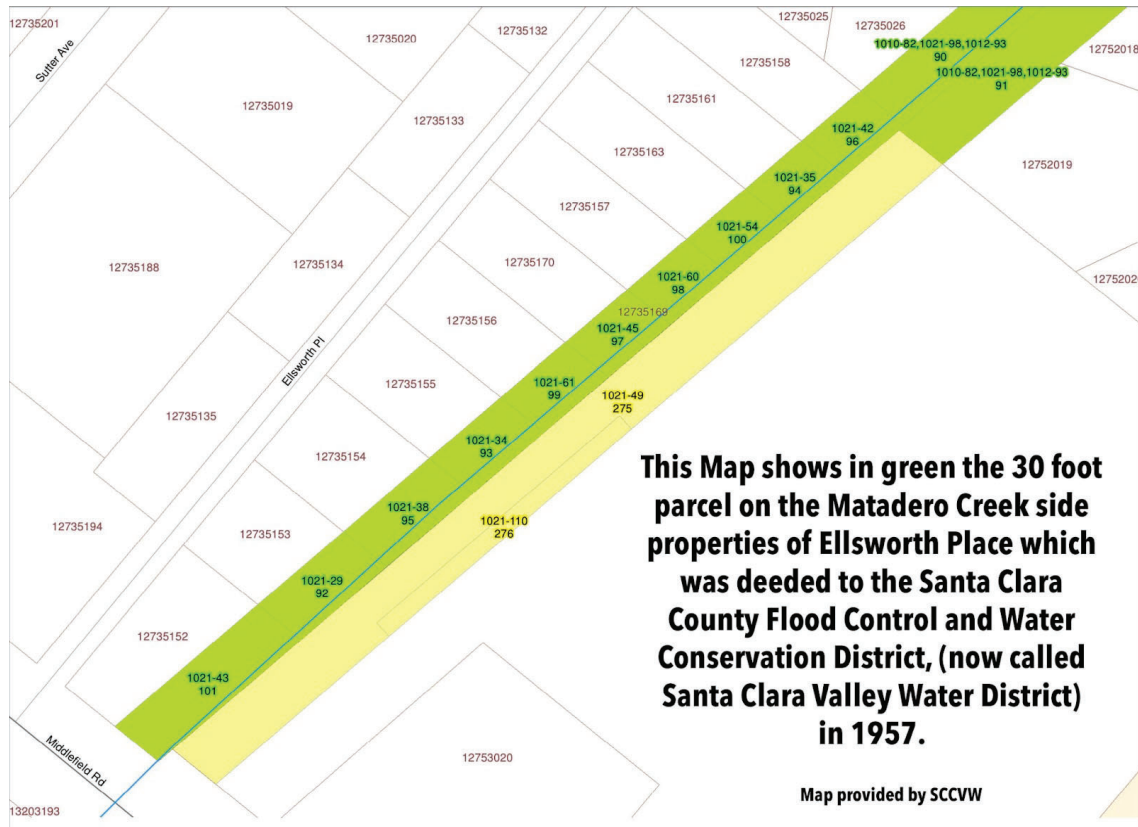
- Carlos Odell, production manager.
- Philip Scofield, chief engineer.
- Miss Vida Volkhardt, junior engineer.
- Mrs. Arnold Keistman, junior draftsman.
- Scott Rice, junior draftsman.
- Roy Mollenberg, junior engineer.
- Millar Clarke, junior engineer.
- Mrs. George H. Kirkbride, executive secretary.

By the middle of September 25 families will arrive from Cleveland to augment the staff of production experts. Other employees will be added, as much as possible from residents of this community, Mr. Heintz said today.

Bergmann's Department Store opened in 1956, two blocks from Ellsworth Place.



In 1957, each of the Matadero Creek side homes deeds 30' off the back of their properties to the Santa Clara County Flood Control and Water Conservation District, so flood prevention can be put in place. While the taking of this land is for the greater good of the area, the parcels of land that are not already considered “substandard” became so. And the City of Palo Alto building codes setbacks for substandard lots do not work well on these odd-shaped parcels.



In conclusion, Ellsworth Place has very humble roots. It was originally squeezed in on a lot located between a creek with warehouses and a gas station, in an area of town that flooded often, and had a road that followed the sewer outlet. It was a place for low-rent homes, which were small at around 800 - 1,000 sq ft., and several of these homes still house families of 4-5 to this day.

Today, our single-family, 1940s cottages average 1,114 sq ft in size and sit on substandard lots averaging 4,049 sq ft. All neighbors know one another and help to look out for one another. We do not allow parking on our street to keep it open in case of emergency. We want the driveway onto Middlefield Road widened, as it never happened, but was in the original plan of Ordinance PC-1810. With the increase in delivery vehicles and traffic on Middlefield Road, the parking lot, which was once 702 & 704 Ellsworth, has become integral to the circulation and safety of our street for both the apartments and houses alike. The apartments have a carport and parking spots on their Ellsworth Place side and would not be able to access those spaces without the use of Ellsworth Place.