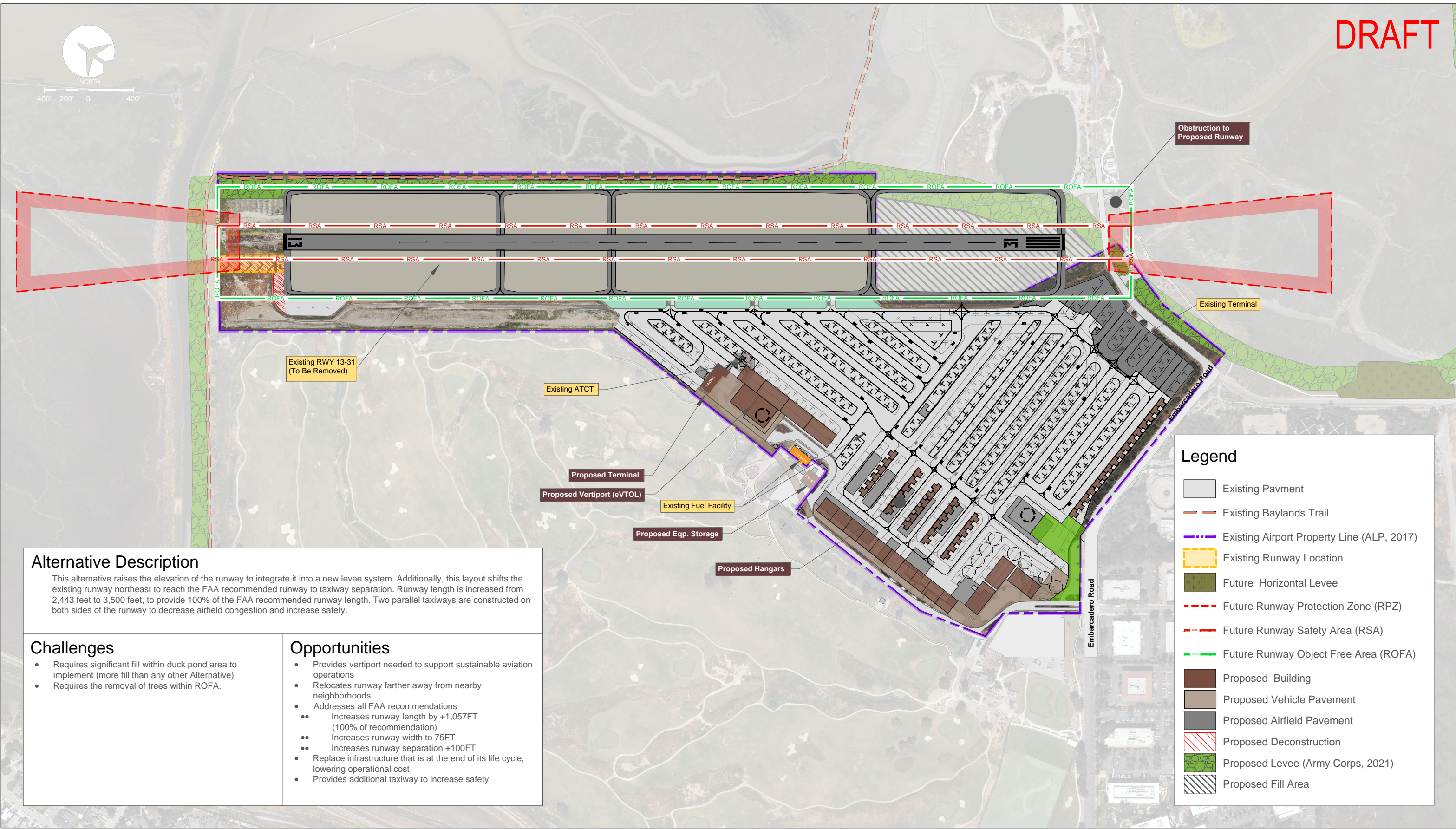


DRAFT



Alternative Description

This alternative raises the elevation of the runway to integrate it into a new levee system. Additionally, this layout shifts the existing runway northeast to reach the FAA recommended runway to taxiway separation. Runway length is increased from 2,443 feet to 3,500 feet, to provide 100% of the FAA recommended runway length. Two parallel taxiways are constructed on both sides of the runway to decrease airfield congestion and increase safety.

- Challenges**

 - Requires significant fill within duck pond area to implement (more fill than any other Alternative)
 - Requires the removal of trees within ROFA.
- Opportunities**

 - Provides vertiport needed to support sustainable aviation operations
 - Relocates runway farther away from nearby neighborhoods
 - Addresses all FAA recommendations
 - Increases runway length by +1,057FT (100% of recommendation)
 - Increases runway width to 75FT
 - Increases runway separation +100FT
 - Replace infrastructure that is at the end of its life cycle, lowering operational cost
 - Provides additional taxiway to increase safety

Alternative 4 | 3,500 FT Runway with Northeastern Shift

Palo Alto Airport Long-Range Facilities & Sustainability Plan (LRFSP)

Source: C&S Engineers, Inc.



Apr 03, 2024 - 10:20am
F:\Project\075 - City of Palo Alto\075\001\022 - PAO Airport Master Plan Ph 2\Planning-Study\CADD\Exhibits\Public Meeting CAD\PAO_Figure 4_Alt 4.dwg