

NOT YET APPROVED

ORDINANCE NO. _____
Ordinance of The Council of The City of Palo Alto Approving
a Plan for Improvements to the
Palo Alto Baylands as part of the
Horizontal Levee Pilot Project

The Council of the City of Palo Alto does ORDAIN as follows:

SECTION 1. Findings. The City Council finds and declares that:

- (a) Article VIII of the Charter of the City of Palo Alto and Section 22.08.005 of the Palo Alto Municipal Code (PAMC) require that, before any substantial building, construction, reconstruction or development is commenced or approved, upon or with respect to any land held by the City for park purposes, the Council shall first cause to be prepared and by ordinance approve and adopt a plan therefor.
- (b) The Horizontal Levee Pilot Project (Project) is part of the Marsh Front Trail (Trail). The Project site is located in the City's Baylands, which is dedicated parkland (See PAMC § 22.08.020 *et seq.*) Based on the current habitat quality of the Project site, the location has been identified as in need of enhancements to better provide refugia for many species including the endangered Salt Marsh Harvest Mouse.
- (c) The City of Palo Alto intends to authorize the construction of a horizontal levee pilot system that will enhance habitat, maintain public access, provide educational opportunities, provide regionally-beneficial information on nature-based sea level rise adaptation options, and beneficially reuse treated wastewater.
- (d) The Plan of improvements shall comprise, as follows:
 - (1) The Project will construct a horizontal levee along Harbor Marsh and install along Embarcadero and Harbor Roads an underground treated wastewater pipeline for irrigation of the horizontal levee. The horizontal levee will be planted with various native plants to restore diverse transitional habitats including freshwater marsh, wet meadow, and riparian scrub. The Project will re-align a portion of the Trail as required to accommodate the horizontal levee and reconnect habitats. The Project will install educational signage and provide opportunities for public participation in community science activities such as photo-point monitoring of habitat restoration and water quality testing.
 - (2) The Project will require temporary rerouting of a portion of the Marsh Front Trail and temporary traffic restrictions to a portion of Harbor Road to accommodate construction.

(e) The Project described above and as otherwise depicted in the attached exhibit is consistent with recreation and conservation purposes

(f) The Council desires to approve the Plans for the Project described above and as depicted in Exhibit "A".

SECTION 2. The Council hereby approves the Plan for construction of the Horizontal Levee Pilot Project as described in this Ordinance.

SECTION 3. City of Palo Alto is the Lead Agency for the Project under the California Environmental Quality Act (CEQA) and finds that the Project is categorically exempt under CEQA Section 15333, Class 33 for small habitat restoration projects.

SECTION 4. This ordinance shall be effective on the thirty-first day after the date of its adoption.

INTRODUCED:

PASSED:

AYES:

NOES:

ABSENT:

ABSTENTIONS:

ATTEST:

City Clerk

Mayor

APPROVED AS TO FORM:

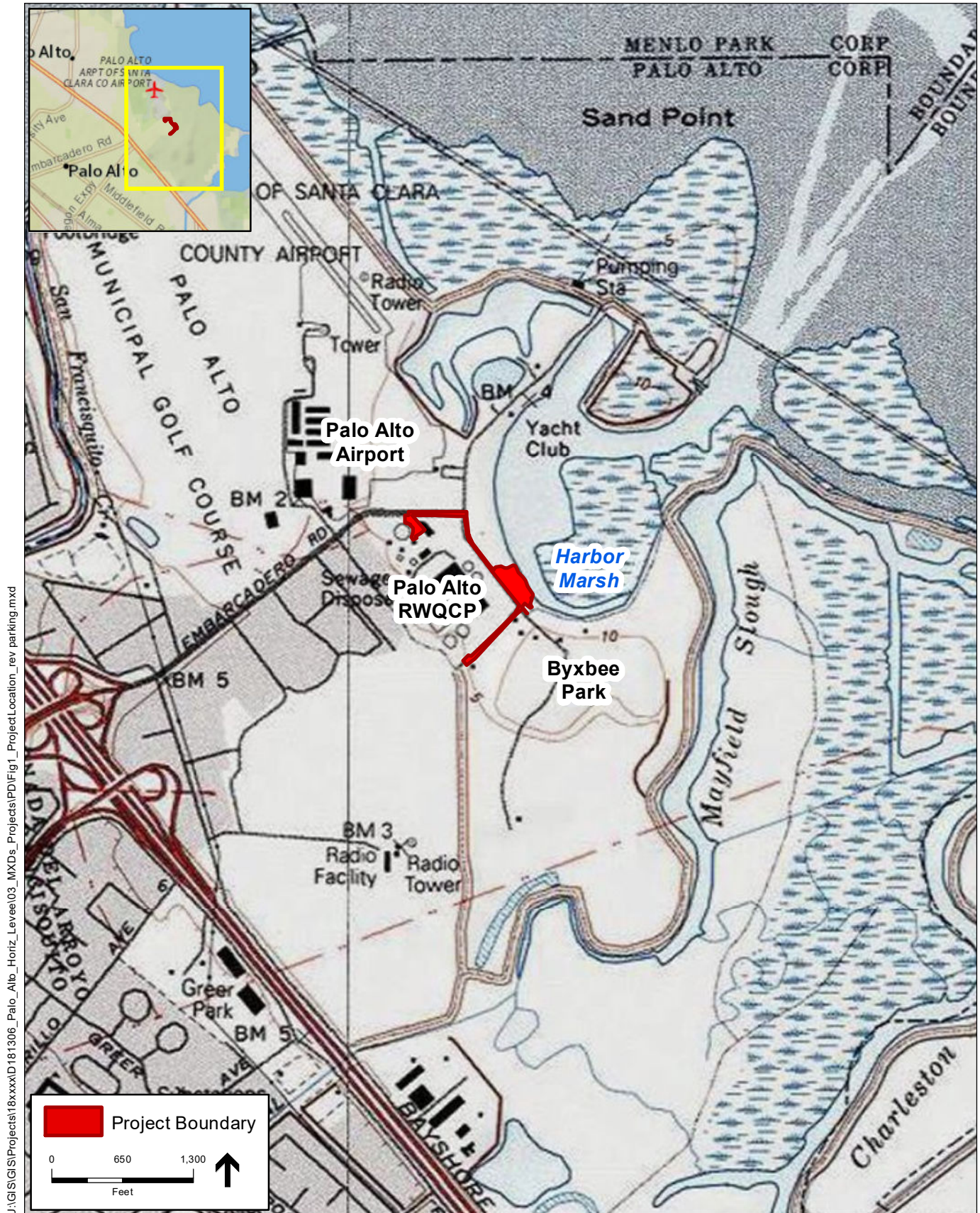
APPROVED:

Deputy City Attorney

City Manager

Director of Community Services

EXHIBIT A

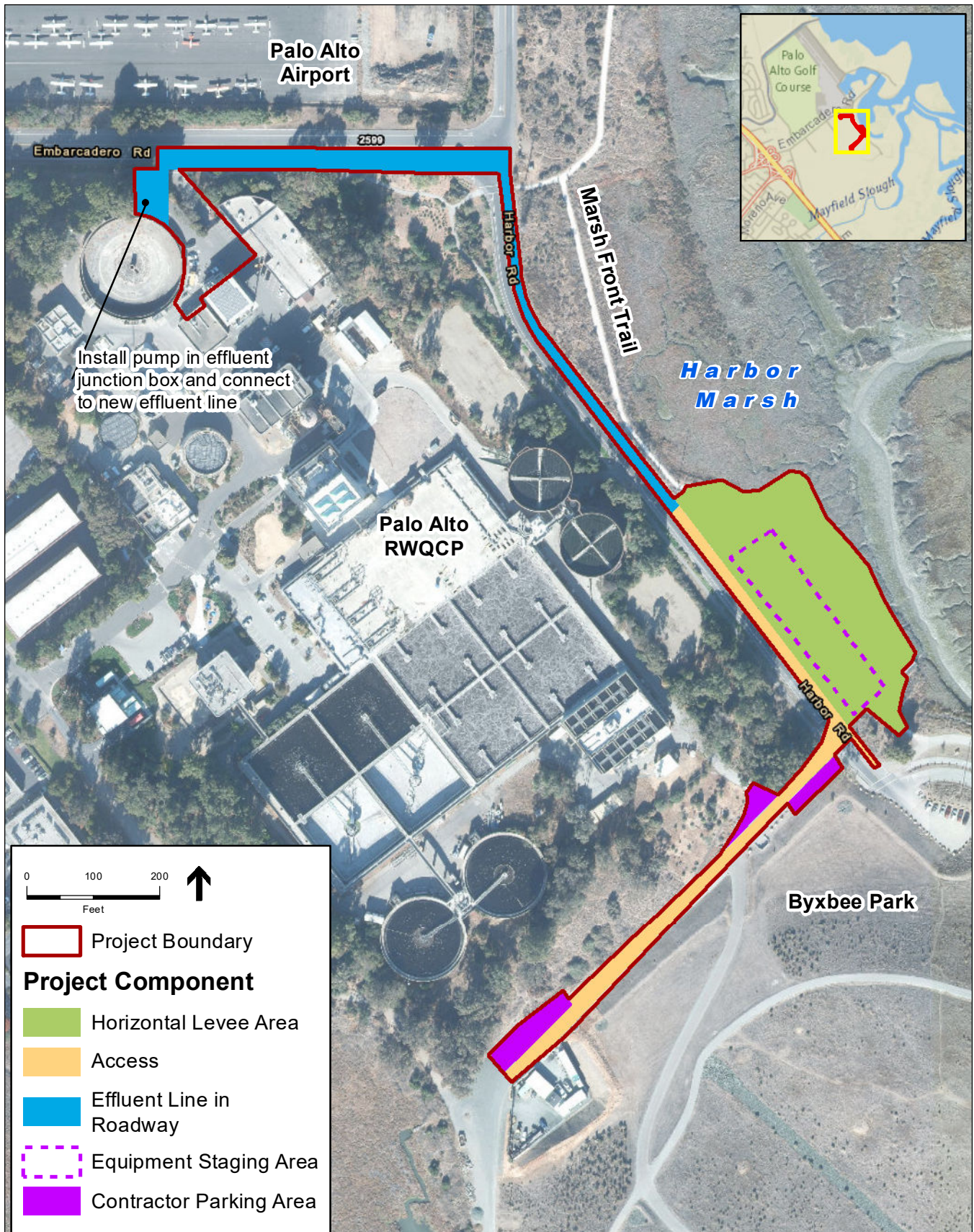


SOURCE: USGS 7.5' Topographic Quadrangle (Mountain View, CA); ESA 2022

Palo Alto Horizontal Levee Pilot Project. D201801306

Figure 1
Project Location

EXHIBIT A

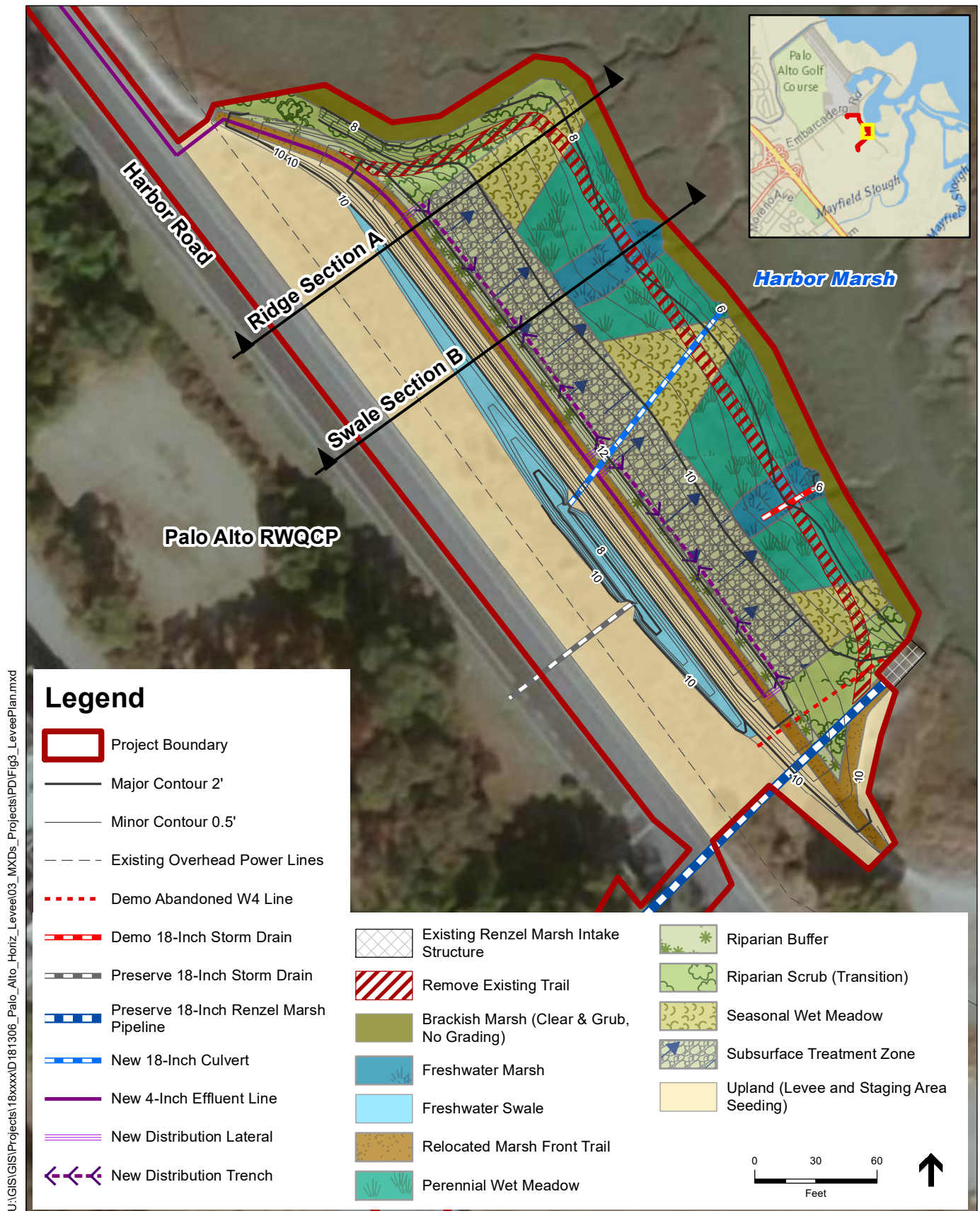


SOURCE: ESRI 2021; ESA 2022

Palo Alto Horizontal Levee Pilot Project. D201801306

Figure 2
Project Components

EXHIBIT A

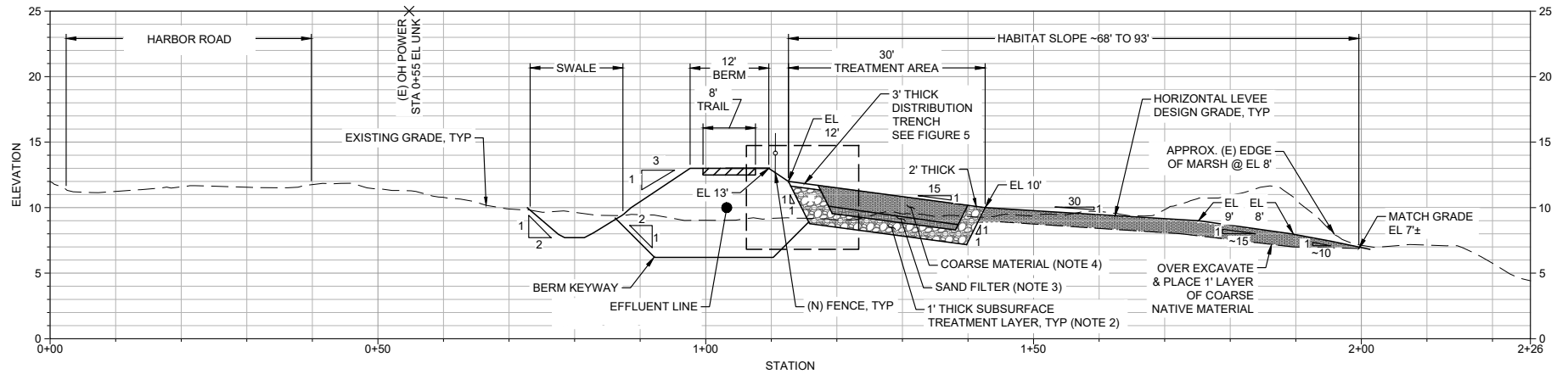


SOURCE: ESRI 2021; ESA 2022

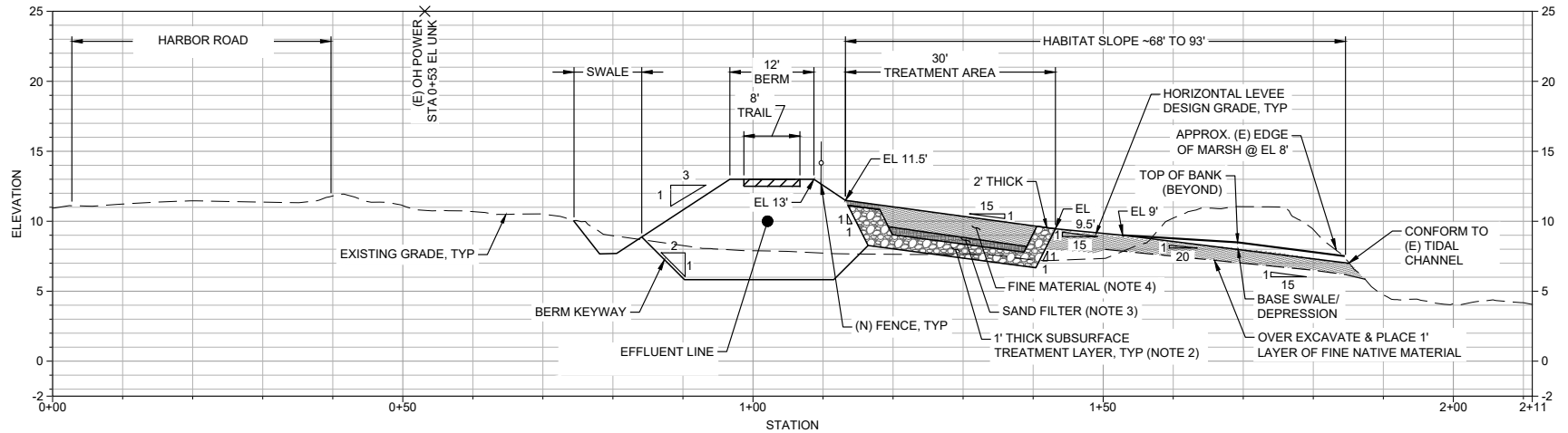
Palo Alto Horizontal Levee Pilot Project. D201801306

Figure 3
Draft Horizontal Levee Plan

EXHIBIT A



A TYPICAL SECTION - RIDGES/HIGH & WIDE
- PROFILE



B TYPICAL SECTION - SWALES & DEPRESSIONS
- PROFILE

NOTES

1. SEGREGATE FINE AND COARSE MATERIAL ENCOUNTERED DURING EXCAVATION OF SITE TO SUBGRADE. DURING FILL OPERATIONS, PLACE COARSE MATERIAL ON THE RIDGES AND FINE MATERIALS IN THE SWALES.
2. SUBSURFACE TREATMENT LAYER COMPRISED OF A BLEND OF DRAIN ROCK AND COMPOSTED WOOD CHIPS.
3. SAND FILTER COMPRISED OF A BLEND OF SAND AND WOOD CHIPS.
4. COARSE AND FINE MATERIAL INCLUDES A BLEND OF NATIVE MATERIAL WITH COMPOSTED WOOD FINES.
5. FUTURE FLOOD CONTROL LEVEE MAY OR MAY NOT BE CONSTRUCTED, BUT THIS LAYOUT PLANS FOR ITS POTENTIAL SPACE SHOULD IT BE CONSTRUCTED.
6. ALL ELEVATIONS ARE ON NORTH AMERICAN VERTICAL DATUM 1988 (NAVD88).

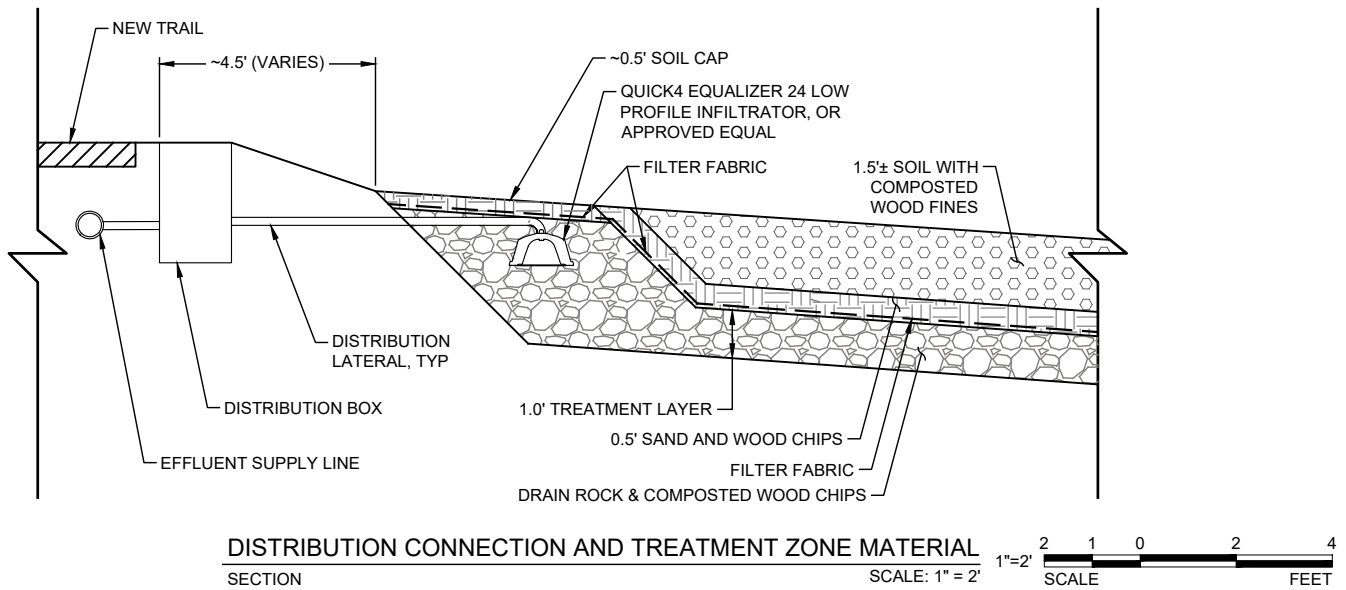
Palo Alto Horizontal Levee Pilot Project . D201801306

Figure 4

Draft Horizontal Levee Sections



EXHIBIT A



Palo Alto Horizontal Levee Pilot Project . D201801306

Figure 5

Draft Distribution Detail