

# California Avenue Street Improvements

## SHEET INDEX:

### SHEETS

EL CAMINO INTERSECTION EAST

ASH STREET INTERSECTION

BIRCH STREET INTERSECTION

DETAIL SHEET

### GENERAL NOTES

1. COMPOSITE BASE SHEET: THE PROPOSED IMPROVEMENTS SHOWN ON THESE DRAWINGS ARE SUPERIMPOSED ON A BASE SHEET. THIS BASE SHEET IS COMPILED FROM THE TOPOGRAPHIC SURVEY, AND OTHER ARCHITECTURAL AND/OR ENGINEERING DOCUMENTS. THE CITY SHALL NOT BE HELD LIABLE FOR CHANGES, INACCURACIES, OMISSIONS, OR OTHER ERRORS ON THESE DOCUMENTS. THE COMPOSITE BASE SHEET IS PROVIDED AS AN AID ONLY AND THE CONTRACTOR SHALL BE RESPONSIBLE FOR REVIEWING THESE DOCUMENTS AND INCORPORATING/INTEGRATING ALL CONSTRUCTION AS REQUIRED TO ACCOMMODATE.
2. UTILITIES: PRIOR TO CONSTRUCTION, THE CONTRACTOR IS RESPONSIBLE FOR CONTACTING THE PALO ALTO UTILITIES COMPANIES INVOLVED AND REQUESTING A VISUAL VERIFICATION OF THE LOCATIONS OF THEIR UNDERGROUND FACILITIES. THE CONTRACTOR OR ANY SUBCONTRACTOR FOR THIS CONTRACT SHALL NOTIFY MEMBERS OF THE U.S.A. 5 DAYS IN ADVANCE OF PERFORMING EXCAVATION WORK BY CALLING THE TOLL-FREE NUMBER (800) 642-2444. EXCAVATION IS DEFINED AS BEING 18 OR MORE INCHES IN DEPTH BELOW THE EXISTING SURFACE.  
  
THE CONTRACTOR IS CAUTIONED THAT ONLY EXCAVATION WILL REVEAL THE TYPES, EXTENT, SIZES, LOCATION, AND DEPTHS OF SUCH UNDERGROUND UTILITIES. HOWEVER, THE CONSULTANT CAN ASSUME NO RESPONSIBILITY FOR THE COMPLETENESS OR ACCURACY OF ITS DELINEATION OF SUCH UNDERGROUND UTILITIES, NOR FOR THE EXISTENCE OF OTHER BURIED OBJECTS OR UTILITIES WHICH ARE NOT SHOWN ON THESE DRAWINGS.
3. ALL MATERIALS AND WORKMANSHIP SHALL CONFORM TO THE CITY'S STANDARD DETAILS, STANDARD SPECIFICATIONS, AND GENERAL REQUIREMENTS.
4. CITY WILL PROVIDE PERMITS WHEN APPLICABLE.
5. IT IS THE CONTRACTOR'S RESPONSIBILITY TO VERIFY THE LOCATION OF ALL EXISTING UTILITIES WITH THE APPROPRIATE UTILITY AGENCIES PRIOR TO THE COMMENCEMENT OF CONSTRUCTION. CONTRACTOR SHALL NOTIFY ALL PUBLIC AND PRIVATE UTILITY OWNERS 48 HOURS PRIOR TO COMMENCEMENT OF WORK ADJACENT TO THE UTILITY. CONTACT UNDERGROUND SERVICE ALERT (USA) AT 811 OR 800-227-2600.
6. ANY WORK IN THE PUBLIC RIGHT OF WAY SHALL CONFORM TO CITY STANDARD DETAILS AND SPECIFICATIONS.
7. ALL MANHOLES, VALVE BOXES, MONUMENT BOXES, AND OTHER STRUCTURES IN THE PAVEMENT AREA SHALL BE ADJUSTED TO FINISH GRADE BEFORE PAVING FINAL LIFT.
8. GRADE BREAKS ON CURBS AND SIDEWALKS ARE TO BE ROUNDED OFF ON FORM WORK AND FINISHED SURFACING.
9. ALL SURPLUS AND UNSUITABLE MATERIAL SHALL BE REMOVED FROM PUBLIC RIGHT-OF-WAY.
- 10.CONTRACTOR SHALL PROVIDE ADEQUATE DUST CONTROL AND KEEP MUD AND DEBRIS OFF THE PUBLIC RIGHT-OF-WAY AT ALL TIMES.
- 11.ALL TRENCHES AND EXCAVATIONS SHALL BE CONSTRUCTED IN STRICT COMPLIANCE WITH THE APPLICABLE SECTIONS OF CALIFORNIA AND FEDERAL O.S.H.A. REQUIREMENTS AND OTHER APPLICABLE SAFETY ORDINANCES. CONTRACTOR SHALL BEAR FULL RESPONSIBILITY FOR TRENCH SHORING DESIGN AND INSTALLATION.
- 12.EXISTING UTILITIES SHOWN ARE BASED UPON RECORD INFORMATION AND ARE APPROXIMATE IN LOCATION AND DEPTH. THE CONTRACTOR SHALL POTHOLE ALL EXISTING UTILITIES THAT MAY BE AFFECTED BY NEW FACILITIES IN THIS CONTRACT, VERIFY ACTUAL LOCATION AND DEPTH, AND REPORT POTENTIAL CONFLICTS TO THE ENGINEER PRIOR TO EXCAVATING FOR NEW FACILITIES.
- 13.CONTRACTOR SHALL PERFORM HIS CONSTRUCTION AND OPERATION IN A MANNER, WHICH WILL NOT ALLOW HARMFUL POLLUTANTS TO ENTER THE STORM DRAIN SYSTEM. TO ENSURE COMPLIANCE , THE CONTRACTOR SHALL IMPLEMENT THE APPROPRIATE BEST MANAGEMENT PRACTICE (BMP) AS OUTLINED IN THE BROCHURES ENTITLED "BEST MANAGEMENT PRACTICE FOR THE CONSTRUCTION INDUSTRY" ISSUED BY THE SANTA CLARA VALLEY NONPOINT SOURCE POLLUTION CONTROL PROGRAM, TO SUIT THE CONSTRUCTION SITE AND JOB CONDITION.
- 14.OVERNIGHT PARKING OF CONSTRUCTION EQUIPMENT IN THE PUBLIC RIGHT-OF-WAY SHALL NOT BE PERMITTED, EXCEPT AT LOCATION(S) APPROVED BY THE CITY TRAFFIC ENGINEER.
- 15.REFER CITY STANDARD DETAILS FOR BASE UNDER CURB AND GUTTER AND PAVED SECTIONS.
- 16.NEAR COMPLETION OF THE PROJECT, CONTRACTOR SHALL REPLACE ADJOINING INFRASTRUCTURE DAMAGED DURING THE PROJECT CONSTRUCTION WORK. INCLUDING BUT NOT LIMITED TO: SIDEWALKS, CURB AND GUTTER, STREET ASPHALT, UTILITIES, LANDSCAPE AND IRRIGATION.
17. CONTRACTOR TO PROVIDE TRAFFIC CONTROL PLANS IF REQUESTED BY THE CITY'S TRANSPORTATION DEPARTMENT. PLANS TO INCLUDE ALL SIGNAGE AND BARRIERS USED AND REVISED PER CITY COMMENTS UNTIL APPROVED.
- 18.CONTRACTOR TO PROVIDE A THIRD PARTY SAFETY INSPECTION AUDIT TO THE CITY OF PALO ALTO UPON COMPLETION OF THE PLAYGROUND CONSTRUCTION. PLAYGROUND TO REMAIN CLOSED UNTIL PLAYGROUND REPORT IS SUBMITTED AND PASSES ALL CODES AND REGULATIONS.

1. 2022 CBC CHAPTER 35: PROVIDE ALL THE APPLICABLE/ADOPTED STANDARDS. WHERE A PARTICULAR STANDARD IS REFERENCED IN THE CODE BUT DOES NOT APPEAR AS AN ADOPTED STANDARD IT MAY STILL BE USED. APPLY ONLY THE PORTION OF THE STANDARD THAT IS APPLICABLE TO THE CODE SECTION WHERE THE STANDARD IS REFERENCED, NOT THE ENTIRE STANDARD.

2022 BUILDING STANDARDS ADMINISTRATIVE CODE, PART 1, TITLE 24 C.C.R.  
2022 CALIFORNIA BUILDING CODE (CBC), PART 2, TITLE 24 C.C.R.  
2022 CALIFORNIA ELECTRICAL CODE (CEC), PART 3, TITLE 24 C.C.R.  
2022 CALIFORNIA ENERGY CODE, PART 6, TITLE 24 C.C.R.  
2022 CALIFORNIA EXISTING BUILDING CODE, PART 10, TITLE 24 C.C.R.  
2022 CALIFORNIA REFERENCED STANDARDS, PART 12, TITLE 24 C.C.R.

LIST OF FEDERAL CODES AND STANDARDS (IF APPLICABLE)		
AMERICANS WITH DISABILITIES ACT (ADA), TITLE II OR TITLE III		
FOR TITLE II: UNIFORM FEDERAL ACCESSIBILITY STANDARDS (UFAS)		28 CFR 35.151(c)
OR ADA STANDARDS FOR ACCESSIBLE DESIGN (APPENDIX A OF 28 CFR PART 36)		
FOR TITLE III: ADA STANDARDS FOR ACCESSIBLE DESIGN (APPENDIX A OF 28 CFR PART 36)		28 CFR 36.406
2010 AMERICANS WITH DISABILITIES ACT (ADA) STANDARDS FOR ACCESSIBLE DESIGN		

NOTE: TITLE II APPLIES TO PROJECTS FUNDED AND/OR USED BY STATE AND LOCAL GOVERNMENT SERVICES. TITLE III COVERS PUBLIC ACCOMMODATIONS AND COMMERCIAL FACILITIES. DEPENDING ON THE USE AND FUNDING, BOTH TITLE MAY APPLY TO THE PROJECT.

NFPA 13	AUTOMATIC SPRINKLER SYSTEMS	2022 EDITION
NFPA 14	STANDPIPE SYSTEMS	2022 EDITION
NFPA 17	DRY CHEMICAL EXTINGUISHING SYSTEMS	2022 EDITION
NFPA 17A	WET CHEMICAL EXTINGUISHING SYSTEMS	2022 EDITION
NFPA 20	STATIONARY FIRE PUMPS	2022 EDITION
NFPA 24	PRIVATE FIRE SERVICE MAINS	2022 EDITION
NFPA 72	NATIONAL FIRE ALARM AND SIGNALING CODE (CALIFORNIA AMENDED) (NOTE SEE UL STANDARD 1971 FOR "VISUAL DEVICES")	2022 EDITION
NFPA 253	CRITICAL RADIANT FLUX OF FLOOR COVERING SYSTEMS	2022 EDITION
NFPA 2001	CLEAN AGENT FIRE EXTINGUISHING SYSTEMS	2022 EDITION
ASME 17.1	ELEVATOR STANDARD	2022 EDITION

REFERENCE CODE SECTIONS FOR APPLICABLE STANDARDS - 2022 CALIFORNIA BUILDING CODE (FOR SFM) REFERENCED STANDARDS CHAPTER 35

ADA STANDARD FOR ACCESSIBLE DESIGN (APPENDIX A OF 28 CFR PART 36)

THE INTENT OF THESE DRAWINGS AND SPECIFICATIONS IS THAT WORK OF THE ALTERATION, REHABILITATION OR RECONSTRUCTION IS TO BE IN ACCORDANCE WITH TITLE 24, CALIFORNIA CODE OF REGULATIONS. SHOULD ANY EXISTING CONDITIONS SUCH AS DETERIORATION OR NON-COMPLYING CONSTRUCTION BE DISCOVERED WHICH IS NOT COVERED BY THE CONTRACT DOCUMENTS WHEREIN THE FINISHED WORK WILL NOT COMPLY WITH TITLE 24, CALIFORNIA CODE OF REGULATIONS, A CHANGE ORDER, OR A SEPARATE SET OF PLANS AND SPECIFICATIONS, DETAILING AND SPECIFYING THE REQUIRED WORK SHALL BE SUBMITTED TO AND APPROVED BY THE OWNER REPRESENTATIVE BEFORE PROCEEDING WITH THE WORK.

ALL DESIGNS, DOCUMENTS, AND PLANS SHOWN IN THIS DRAWING ARE OWNED BY AND THE PROPERTY OF THE CITY OF PALO ALTO AND WERE CREATED, AND DEVELOPED FOR USE WITH THE SPECIFIED PROJECT. WRITTEN PERMISSION BY THE CITY OF PALO ALTO IS REQUIRED TO USE THESE PLANS FOR OTHER PURPOSES.

CITY OF PALO ALTO PUBLIC WORKS STANDARD DRAWINGS & SPECIFICATIONS  
PALO ALTO MUNICIPAL CODE (PMC)  
CALIFORNIA BUILDING CODE (CBC) 2022  
AASHTO LRFD  
ASCE 7  
CAL/OSHA

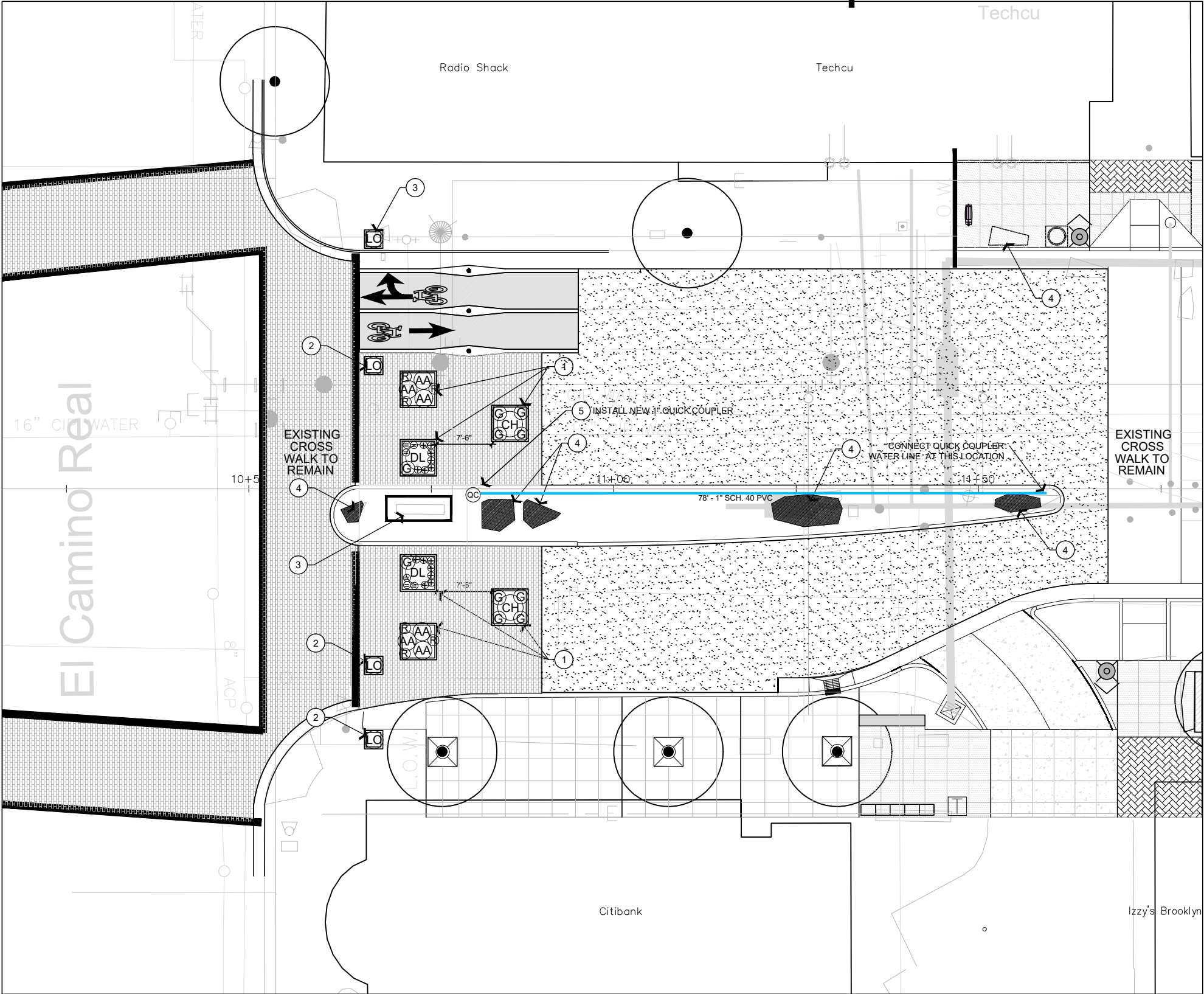


#### WARNING • CAUTION

EXISTING UNDERGROUND UTILITIES  
CONTACT: UNDERGROUND SERVICE ALERT  
PHONE: 811  
FOR MARKING PRIOR TO DIGGING

## COVER SHEET

# California Avenue Street Improvements



## CONSTRUCTION LEGEND - CAL. AVE. WEST OF EL CAMINO

SYMBOL	DESCRIPTION	DETAILS
1	6 - 72" SQ. BY 36" TALL FIBERGLASS PLANTERS TYPE: CARDIFF SQUARE CF7236 BY 'OLD TOWN FIBERGLASS' 714.633.3732	DETAIL SHEET #1
2	4 - 30" SQ. BY 30" TALL FIBERGLASS PLANTERS TYPE: CARDIFF SQUARE CF3030 BY 'OLD TOWN FIBERGLASS' 714.633.3732	DETAIL SHEET #1
3	REMOVE EXISTING CONCRETE SIGNAGE, COBBLE STONE BASE AND FOOTING	PHOTO THIS SHEET
4	RELOCATE EXISTING LANDSCAPE BOULDERS TO BOULWARE PARK AT 777 FERNANDO AVE.	
5	INSTALL NEW 1" RAINBIRD QUICK COUPLER IN ROUND PLASTIC BOX	DETAIL SHEET #2



Existing Cal. Ave. sign to be demolished

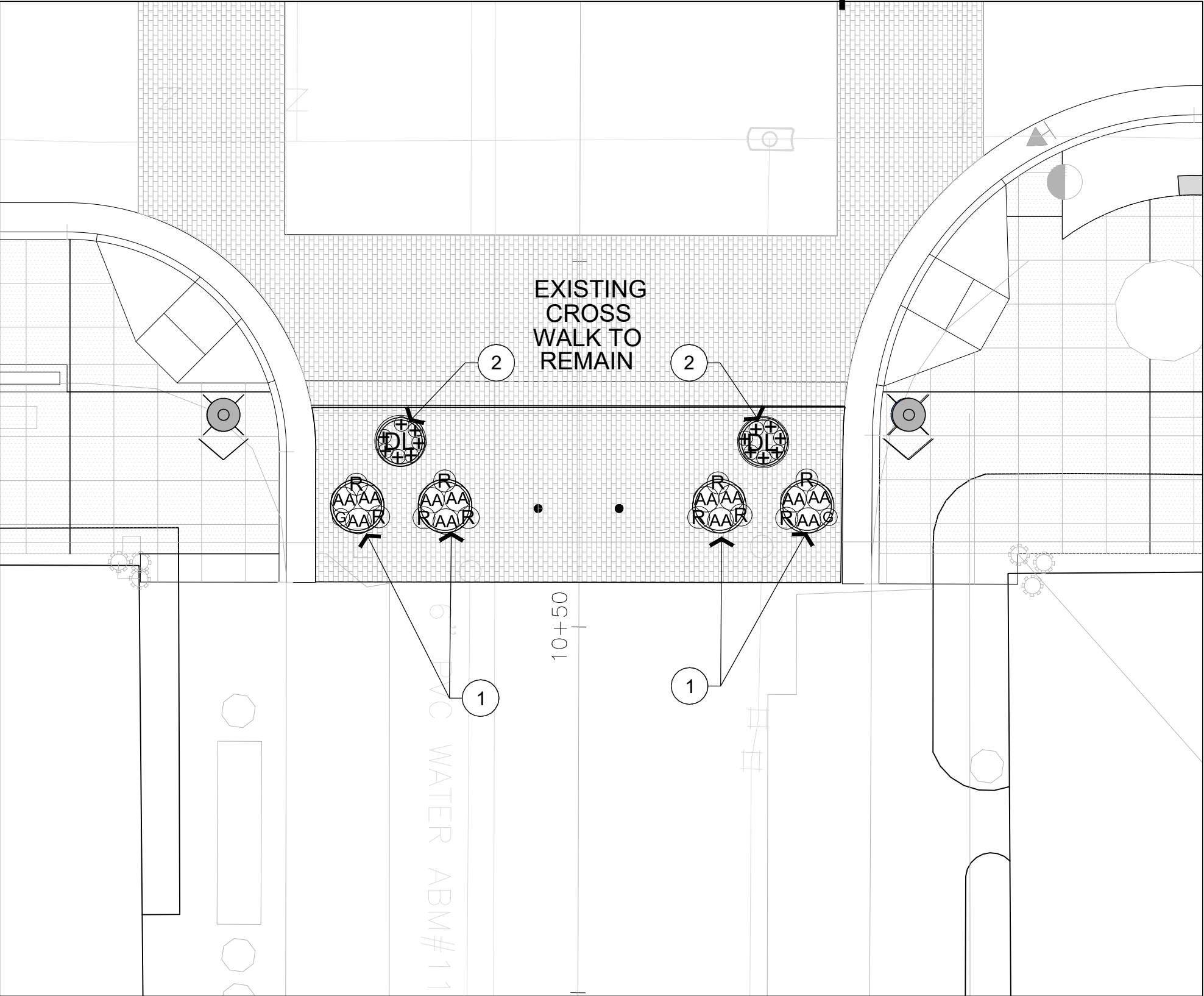
PLANT LEGEND				
SYMBOL	PLANT NAME	QNTY	SIZE	DETAIL SHEET
<b>EL CAMINO INTERSECTION</b>				
AA	AGAVE ATTENUATA 'NOVA BLUE'	6	15 GAL	1
CH	CHAMAEROPS HUMULIS (MULTI)	2	24" BOX	1
DL	DASYURION LONGISSIMA	2	24" BOX	1
=	DUDLEYA BRITTONII	6	5 GAL	1
G	LANTANA 'GOLD MOUND'	6	5 GAL	1
G	LANTANA (PURPLE FLOWER)	4	5 GAL	1
LO	OLEA 'LITTLE OLLIE'	4	15 GAL	1
+	SENECIO MANDRALISAEA	14	1 GAL	1
<b>ASH STREET</b>				
AA	AGAVE ATTENUATA 'NOVA BLUE'	12	15 GAL	1
DL	DASYURION LONGISSIMA	2	24" BOX	1
G	LANTANA 'GOLD MOUND'	2	5 GAL	1
+	SENECIO MANDRALISAEA	14	1 GAL	1
<b>BIRCH STREET</b>				
AA	AGAVE ATTENUATA 'NOVA BLUE'	12	15 GAL	1
DL	DASYURION LONGISSIMA	3	24" BOX	1
G	LANTANA 'GOLD MOUND'	10	5 GAL	1
G	LANTANA (PURPLE FLOWER)	5	5 GAL	1
+	SENECIO MANDRALISAEA	33	1 GAL	1

ALL PLANTS TO BE SPOTTED IN FIELD BY CITY LANDSCAPE ARCHITECT CALL 650-444-5024

# El Camino Intersection Improvements (Eastside)

scale: 1" = 16'

# California Avenue Street Improvements



## CONSTRUCTION LEGEND - CAL. AVE. AT ASH STREET

SYMBOL	DESCRIPTION	DETAILS
①	4 - 44" DIA. BY 30" TALL FIBERGLASS PLANTERS TYPE: MATRIX ML7239 BY 'OLD TOWN FIBERGLASS' 714.633.3732	DETAIL SHEET #1
②	2 - 30" DIA. BY 30" TALL FIBERGLASS PLANTERS TYPE: MATRIX ML3030 BY 'OLD TOWN FIBERGLASS' 714.633.3732	DETAIL SHEET #1

PLANT LEGEND				
SYMBOL	PLANT NAME	QNTY	SIZE	DETAIL SHEET
EL CAMINO INTERSECTION				
AA	AGAVE ATTENUATA 'NOVA BLUE'	6	15 GAL	1
CH	CHAMAEROPS HUMULIS (MULTI)	2	24" BOX	1
DL	DASYLIRION LONGISSIMA	2	24" BOX	1
=	DUDLEYA BRITTONII	6	5 GAL	1
G	LANTANA 'GOLD MOUND'	6	5 GAL	1
G	LANTANA (PURPLE FLOWER)	4	5 GAL	1
LO	OLEA 'LITTLE OLLIE'	4	15 GAL	1
+	SENECIO MANDRALISAEA	14	1 GAL	1
ASH STREET				
AA	AGAVE ATTENUATA 'NOVA BLUE'	12	15 GAL	1
DL	DASYLIRION LONGISSIMA	2	24" BOX	1
G	LANTANA 'GOLD MOUND'	2	5 GAL	1
+	SENECIO MANDRALISAEA	14	1 GAL	1
BIRCH STREET				
AA	AGAVE ATTENUATA 'NOVA BLUE'	12	15 GAL	1
DL	DASYLIRION LONGISSIMA	3	24" BOX	1
G	LANTANA 'GOLD MOUND'	10	5 GAL	1
G	LANTANA (PURPLE FLOWER)	5	5 GAL	1
+	SENECIO MANDRALISAEA	33	1 GAL	1

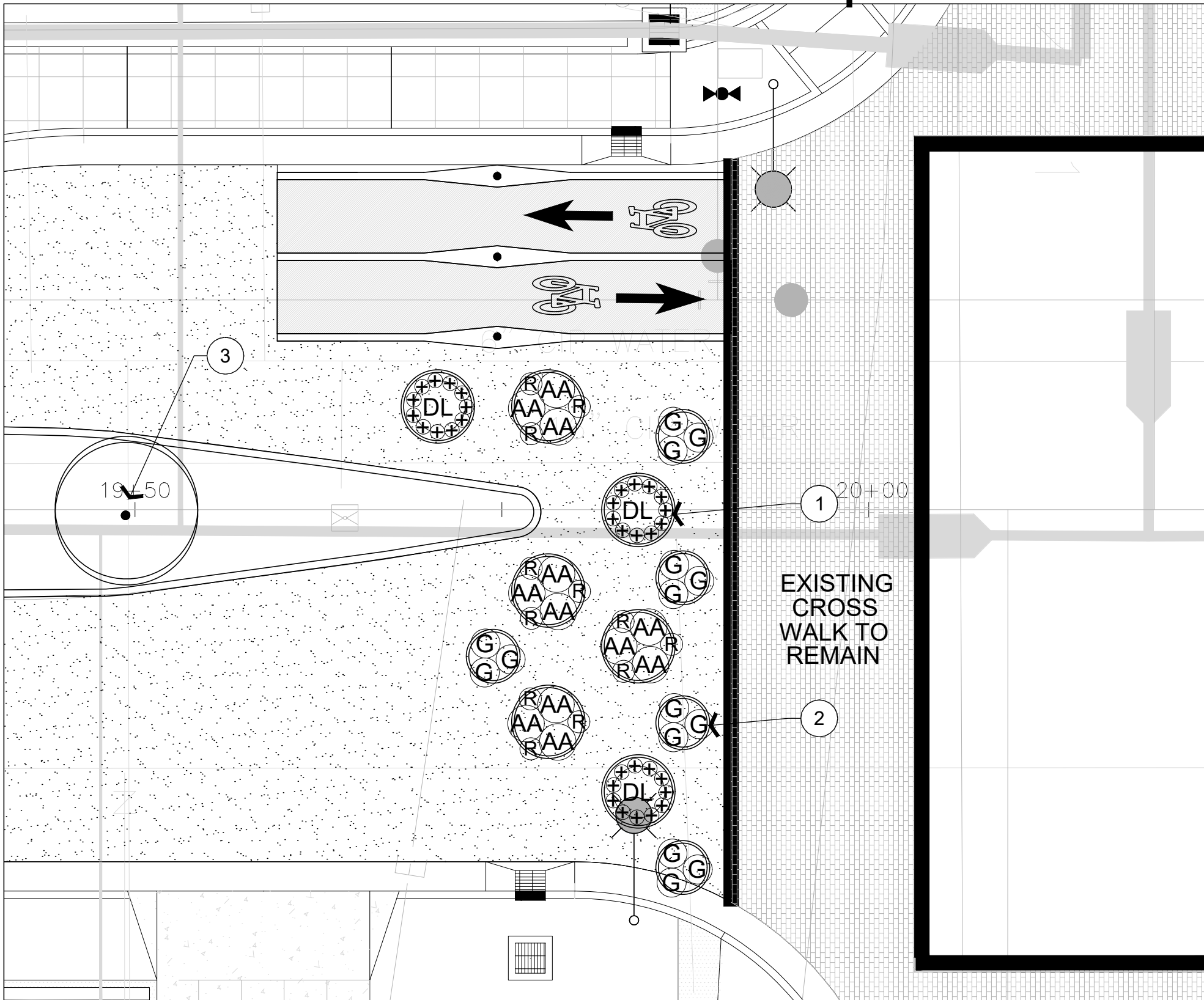
ALL PLANTS TO BE SPOTTED IN FIELD BY CITY LANDSCAPE ARCHITECT CALL 650-444-5024

# Ash Street Intersection Improvements

scale: 1" = 8'



# California Avenue Street Improvements



# Birch Street Intersection Improvements

### CONSTRUCTION LEGEND - CAL. AVE. AT BIRCH STREET

SYMBOL	DESCRIPTION	DETAILS
①	7 - 60" DIA. BY 40" TALL FIBERGLASS PLANTERS TYPE: MATRIX ML6040 BY 'OLD TOWN FIBERGLASS' 714.633.3732	DETAIL SHEET #1
②	5 - 40" DIA. BY 20" TALL FIBERGLASS PLANTERS TYPE: MATRIX ML4020 BY 'OLD TOWN FIBERGLASS' 714.633.3732	DETAIL SHEET #1
③	3 - NIGHT SHADE PLANTS REMOVE FROM CENTER PLANTING AREA INCLUDING ROOTS	PICTURE THIS SHEET



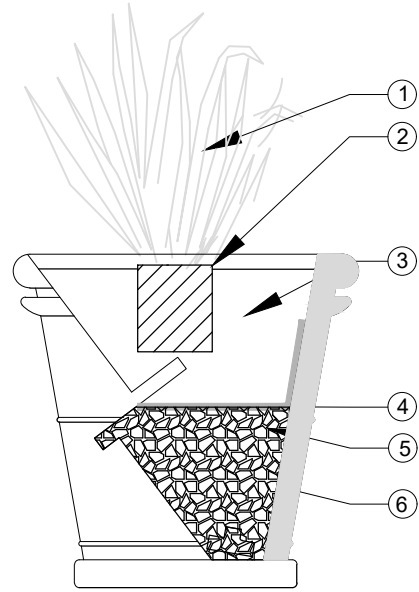
Existing Night Shade plants to be removed

	PLANT LEGEND			
SYMBOL	PLANT NAME	QNTY	SIZE	DETAIL SHEET
	<b>EL CAMINO INTERSECTION</b>			
AA	AGAVE ATTENUATA 'NOVA BLUE'	6	15 GAL	1
CH	CHAMAEROPS HUMULIS (MULTI)	2	24" BOX	1
DL	DASYLIRION LONGISSIMA	2	24" BOX	1
=	DUDLEYA BRITTONII	6	5 GAL	1
G	LANTANA 'GOLD MOUND'	6	5 GAL	1
G	LANTANA (PURPLE FLOWER)	4	5 GAL	1
LO	OLEA 'LITTLE OLLIE'	4	15 GAL	1
+	SENECIO MANDRALISAEA	14	1 GAL	1
	<b>ASH STREET</b>			
AA	AGAVE ATTENUATA 'NOVA BLUE'	12	15 GAL	1
DL	DASYLIRION LONGISSIMA	2	24" BOX	1
G	LANTANA 'GOLD MOUND'	2	5 GAL	1
+	SENECIO MANDRALISAEA	14	1 GAL	1
	<b>BIRCH STREET</b>			
AA	AGAVE ATTENUATA 'NOVA BLUE'	12	15 GAL	1
DL	DASYLIRION LONGISSIMA	3	24" BOX	1
G	LANTANA 'GOLD MOUND'	10	5 GAL	1
G	LANTANA (PURPLE FLOWER)	5	5 GAL	1
+	SENECIO MANDRALISAEA	33	1 GAL	1

**ALL PLANTS TO BE SPOTTED IN FIELD BY CITY LANDSCAPE ARCHITECT CALL 650-444-5024**

scale: 1" = 8'

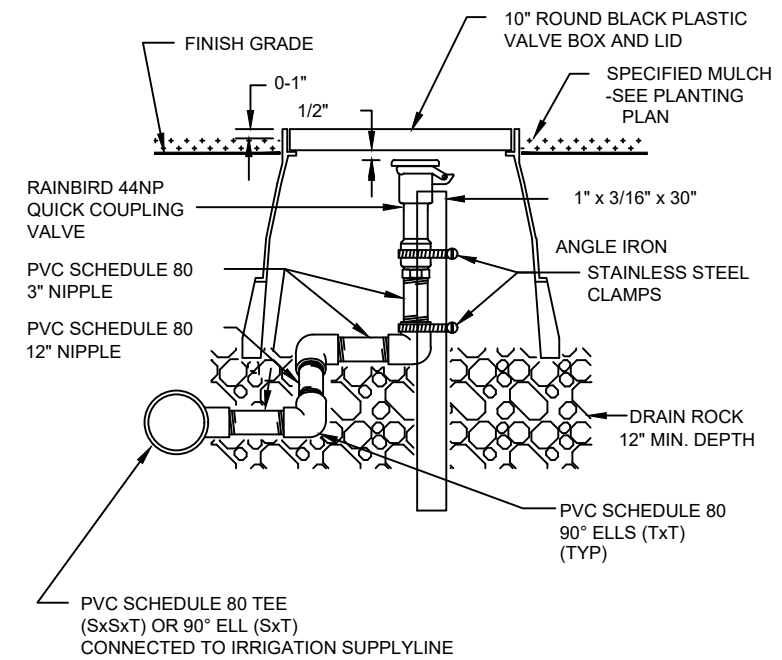
# California Avenue Street Improvements



- ① POTTED PLANT
- ② ROOTBALL CROWN TO BE 1" ABOVE  
POTTING SOIL LEVEL &  
2" MIN. BELOW TOP OF POT
- ③ TOP SOIL (SUBMIT SAMPLE) -  
NO POTTING SOIL
- ④ FILTER FABRIC BETWEEN SOIL  
& GRAVEL LEVELS
- ⑤ 3/4" ANGULAR GRAVEL @ 12" MIN.  
BELOW BOTTOM OF ROOT BALL
- ⑥ WALL OF POT

## 1 PLANTER INSTALLATION

DETAIL  
NOT TO SCALE



NOTE: SET TOP OF BOX EVEN WITH FINISH GRADE IN TURF AREAS.

NOTE: REFER TO CONTRACT TECHNICAL SPECIFICATIONS FOR  
ADDITIONAL INFORMATION

## 2 QUICKCOUPLER

DETAIL  
NOT TO SCALE