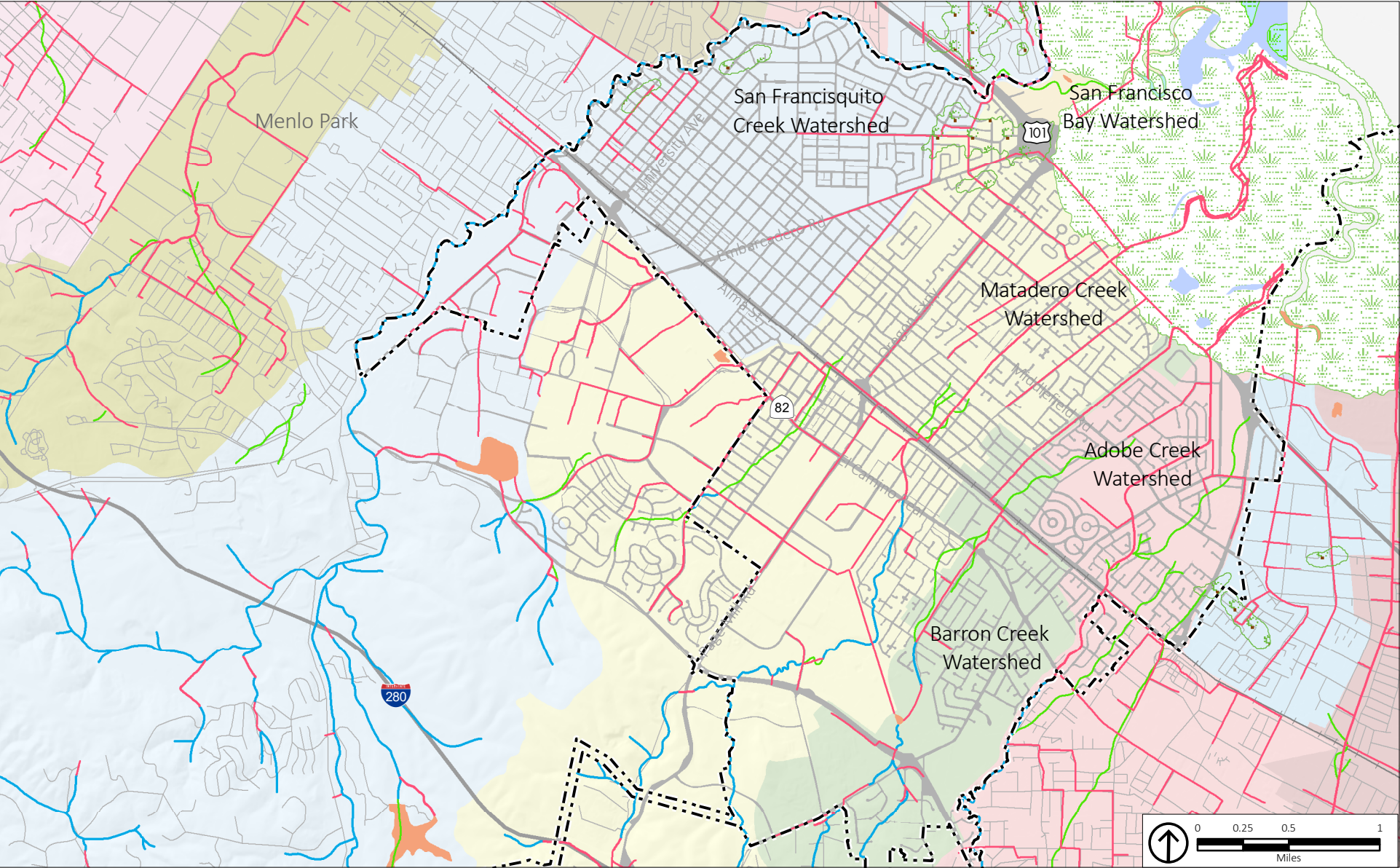
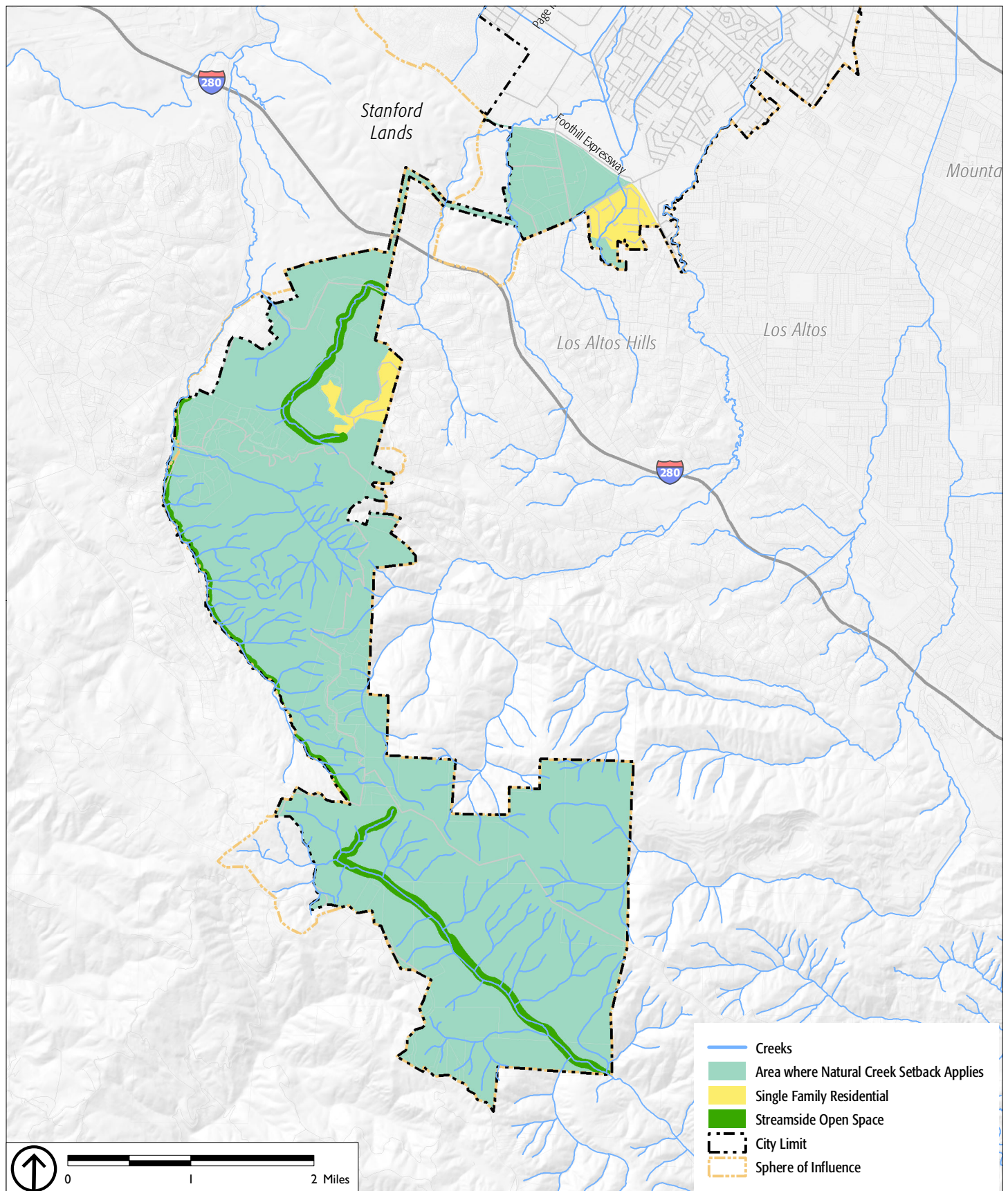


PALO ALTO COMPREHENSIVE PLAN
NATURAL ENVIRONMENT ELEMENT



- | | | | |
|-------------------------------------|-------------------------|---------------------------|----------------------------|
| Creeks | Historical creeks | Tidal marsh, now water | City Limit |
| Underground culverts & storm drains | Tidal marsh, circa 1850 | Freshwater marsh, modern | Artificial bodies of water |
| Engineered channels | Flood control channels | Willow groves, circa 1850 | Bay or slough |

Source: Janet M. Sowers, William Lettis & Associates, Inc., and the San Francisco Estuary; PlaceWorks, 2015.



Source: ESRI, 2010; Tiger Lines, 2010; USGS, 2010; NHD, 2013; City of Palo Alto, 2016; PlaceWorks, 2016.