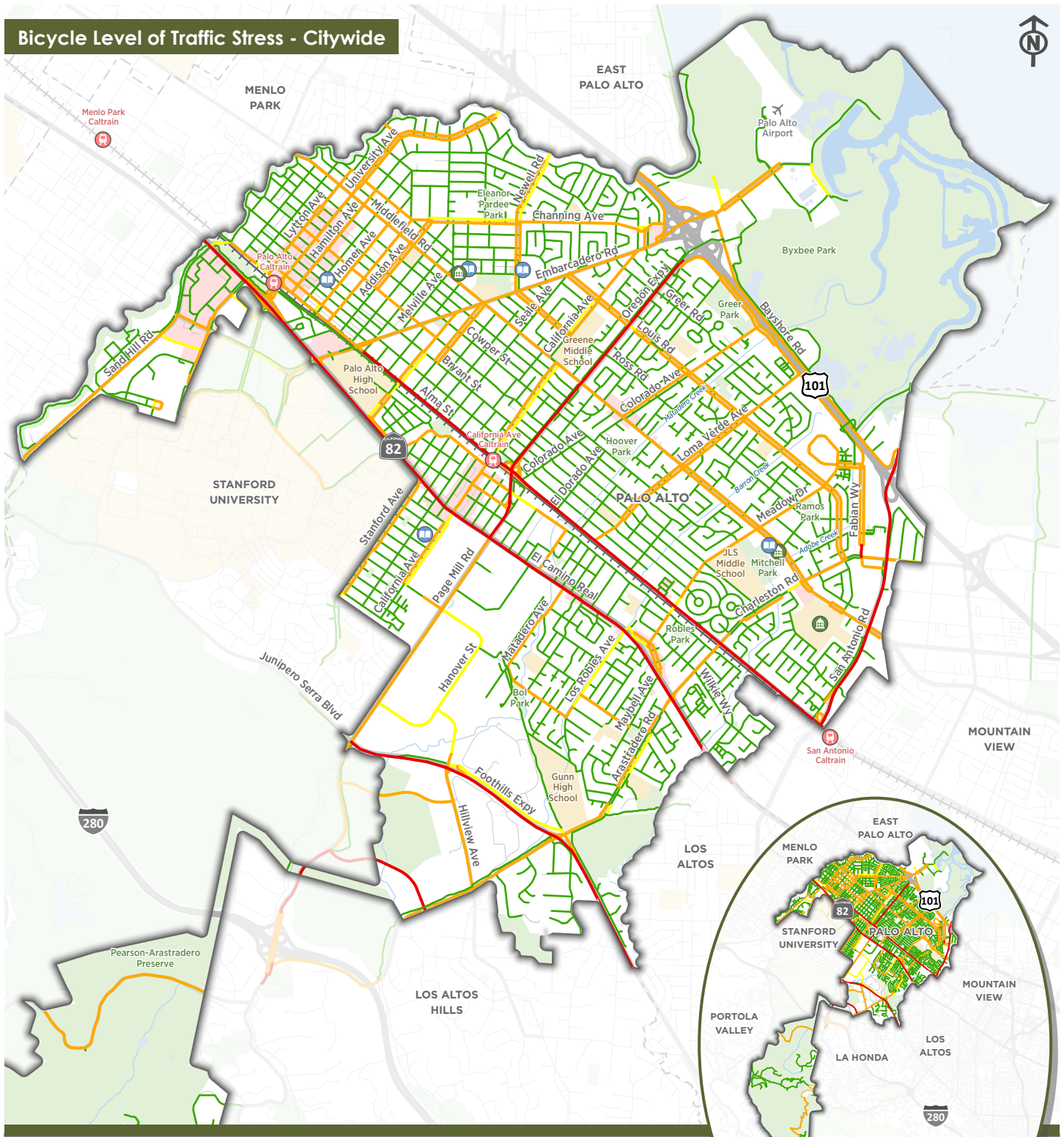


# Bicycle Level of Traffic Stress - Citywide



- |   |  |                  |
|---|--|------------------|
| <span style="color: green;">—</span> LTS 1  | <span style="border: 1px solid black; display: inline-block; width: 20px; height: 10px;"></span> City of Palo Alto   | Community Center |
| <span style="color: yellow;">—</span> LTS 2 | <span style="background-color: #d4edda; display: inline-block; width: 20px; height: 10px;"></span> Park/Open Space   | Library          |
| <span style="color: orange;">—</span> LTS 3 | <span style="background-color: #fff3cd; display: inline-block; width: 20px; height: 10px;"></span> School/University | Caltrain Stop    |
| <span style="color: red;">—</span> LTS 4    | <span style="background-color: #f8d7da; display: inline-block; width: 20px; height: 10px;"></span> Commercial Center | Railroad         |

**Note:** Split lines are only used for roadways with different conditions per direction (for example: bike lane in only one direction or parking only on one side), otherwise all roads are shown with only a centerline.

0 1 2 Miles

Data Sources: City of Palo Alto, MTC

